

KITTITAS
COUNTY

HAZARD MITIGATION PLAN

Kittitas School District
Annex



Kittitas County
Public Works Department

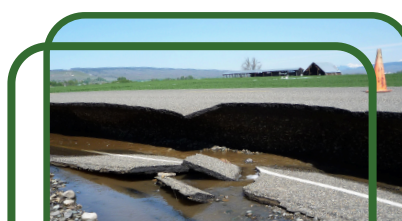




TABLE OF CONTENTS

| | |
|---|-----------|
| 1. Introduction..... | 1 |
| 2. Local Planning Team..... | 1 |
| 3. Jurisdiction Profile | 1 |
| 3.1. Population | 1 |
| 3.1.1. Underserved Population | 1 |
| 3.2. Brief History..... | 2 |
| 3.3. Governing Body Format | 2 |
| 4. Development Trends | 2 |
| 4.1. Changes in Priority | 3 |
| 5. Capability Assessment..... | 3 |
| 5.1. Planning and Regulatory Capabilities | 3 |
| 5.2. Administrative and Technical Capabilities..... | 4 |
| 5.3. Financial Resources | 5 |
| 5.4. Education and Outreach Capabilities..... | 5 |
| 5.5. Needs to Expand/Improve Capabilities | 6 |
| 6. Hazard Mitigation Plan Integration | 6 |
| 6.1. Existing Plan Integration | 6 |
| 6.2. Potential Future Integration | 6 |
| 7. Significant Hazard Past Events | 7 |
| 8. National Flood Insurance Program..... | 7 |
| 9. Hazard Vulnerability and Impact Assessment..... | 7 |
| 10. Hazard Risk Ranking..... | 11 |
| 11. Mitigation Actions | 13 |
| Appendix A. Hazard Maps..... | 20 |
| Appendix B. Plan Adoption | 26 |



1. INTRODUCTION

This Annex details the hazard mitigation elements specific to the Kittitas School District, a participating jurisdiction to the 2024 Kittitas County Hazard Mitigation Plan update. This Annex is not intended to be a standalone document but supplements the information contained in **Volume 1 (Countywide Planning Elements)**. Therefore, all sections of **Volume 1** including the planning process, hazard identification and risk assessment, mitigation strategy (includes mitigation goals and objectives), and plan maintenance apply to and were met by the Kittitas School District. This Annex provides additional information specific to the District, with a focus on providing additional details on the hazard risk assessment and mitigation strategy (i.e., mitigation actions) for this community.

2. LOCAL PLANNING TEAM

The Kittitas School District Local Planning Team was comprised of the members listed on **Table 1**.

Table 1. Kittitas School District Local Planning Team Members

| Name | Title | Department |
|------------|------------------------------------|------------------------|
| Bryan Nash | Transportation/Facilities Director | Maintenance Department |

3. JURISDICTION PROFILE

The Kittitas School District is located in the agricultural region of central Washington State. With champion athletic teams and a longstanding history of academic success, the District is a prime example of community involvement supporting education and citizenship for all its students. The District serves students living in the City of Kittitas. And the communities of Vantage, Badger Pocket, and other surrounding areas in east Unincorporated Kittitas County. The District is comprised of two (2) schools – Kittitas Elementary School and Kittitas High School – which includes the Kittitas B-5 Special Education Program.

3.1. Population

The Kittitas School District had 571 students enrolled between pre-kindergarten and 12th grade during the 2023-2024 school year.¹ Between the 2019-2020 and 2021-2022 school years, there was a 10.2% decrease in student enrollment and another 7.2% decrease occurred between the 2022-2023 and 2023-2024 school years. **Table 2** shows the District's student enrollment distribution between 2019 and 2024.

Table 2. Student Enrollment Estimates

| Jurisdiction | 2019-2020 School Year | 2020-2021 School Year | 2021-2022 School Year | 2022-2023 School Year | 2023-2024 School Year | Enrollment Change (2019 – 2024) |
|-----------------------------|--------------------------|--------------------------|--------------------------|--------------------------|--------------------------|---------------------------------------|
| Kittitas School District | 678 | 647 | 609 | 615 | 571 | -15.8% |

3.1.1. Underserved Population

In the Kittitas School District, underserved students include, but are not limited to, those of ethnic minority status, migrants, those in foster care, homeless, students with disability, English learners, and socioeconomically disadvantaged. The District offers education in an integrated setting. Special programs

¹ Washington Office of Superintendent of Public Instruction. (2023). Kittitas School District Enrollment Report Card. Retrieved from <https://washingtonstatereportcard.ospi.k12.wa.us/ReportCard/ViewSchoolOrDistrict/100120>.



designed to meet the needs of underserved students include, but are not limited to, special education, remedial reading, early childhood, and English Language Learners. **Table 3** outlines the underserved population within the District's student body.²

Table 3. Underserved Student Population (2023-2024)

| Category | | Students | Percent |
|----------------------------|-----------------------------------|----------|---------|
| Ethnic Minority Status | Hispanic or Latino of any race(s) | 133 | 23.3% |
| | Two or More Races | 10 | 1.8% |
| | Asian | 5 | 0.9% |
| | American Indian/Alaskan Native | 2 | 0.4% |
| | Black/African American | 3 | 0.5% |
| English Language Learners | | 44 | 4.4% |
| Foster Care | | 0 | 0.0% |
| Low-Income | | 322 | 56.4% |
| Mobile | | 15 | 2.6% |
| Homeless | | 0 | 0.0% |
| Migrant | | 13 | 2.3% |
| Section 504 | | 16 | 2.8% |
| Students with Disabilities | | 77 | 13.5% |

3.2. Brief History

The Kittitas School District was formed in 1907. Since, the District has champion athletic teams and a longstanding history of academic success serving as a prime example of community involvement supporting education and citizenship for all students.

3.3. Governing Body Format

The District School Board, led by a strong superintendent, is responsible for the District's finances and formulating educational and school district policies. Five (5) School Board members are elected to terms of four (4) years and serve without pay. The District operates with local, state, and federal funding, administered by a Board of Directors and Superintendent. The Board will assume responsibility for the adoption and implementation of this Plan.

4. DEVELOPMENT TRENDS

In the last five (5) years, the Kittitas School District has seen a decrease in enrollment. The current head count is 571 students while the enrollment in 2019 was 678. However, the District expects an increase in population since the area has the most affordable housing in the Kittitas Valley and has attracted people who want to relocate from major population centers to purchase land. Within the last five (5) years, the Kittitas School District has completed a bond project that include the addition of a kindergarten through second grade wing. This improvement removed the existing Primary building and brought all of the District's elementary grades into the same building. Additionally, the District added a new parking lot

² Ibid.



and a bus loop for student loading and unloading. The City of Kittitas also made improvements to Pierce Street including new pavement. The Kittitas School District was also awarded a clean energy grant to install a solar array at the Kittitas Elementary School in the spring of 2025. Furthermore, the City of Kittitas has plans to install an additional water tower on the north side of the City limits and have approved a fairly large development on the north side of the City which could impact the District's enrollment numbers in the future.

4.1. Changes in Priority

The overall hazard mitigation priorities have not significantly changed for the Kittitas School District since the last Plan update. However, mitigation actions from the previous Plan were updated, and a more concerted effort on achieving equitable outcomes for all communities, including underserved communities and socially vulnerable populations, has been implemented.

5. CAPABILITY ASSESSMENT

Federal regulations require hazard mitigation plans to identify goals for reducing long-term vulnerabilities to the identified hazards in the planning area (Section 201.6(c)(3)(i)). A critical step in the development of specific hazard mitigation actions and projects is assessing existing authorities, policies, programs, and resources and capabilities to use or modify local tools to reduce losses and vulnerability from profiled hazards.

A capability assessment was conducted for Kittitas School District and participating jurisdictions' authorities, policies, programs, and resources. Goals and mitigation actions were developed using input from this assessment. Information regarding the District's jurisdictions' implementation of and continued participation in the National Flood Insurance Program (NFIP) can be found in Section 8 of this Annex.

The Local Planning Team assessed the District's capabilities that can contribute to the reduction of long-term vulnerabilities to hazards. The capabilities include the following categories:

- Planning and Regulatory Capabilities
- Administrative and Technical Capabilities
- Financial Capabilities
- Education and Outreach Capabilities

Additionally, ways to expand on and improve these existing policies and programs to integrate hazard mitigation into the day-to-day activities and programs of the District were considered.

5.1. Planning and Regulatory Capabilities

These include local ordinances, policies, and laws to manage growth and development (e.g., land use plans, capital improvement plans, transportation plans, emergency preparedness and response plans, building codes, and zoning ordinances). The Kittitas School District relies on Kittitas County to maintain a strong framework of codes, ordinances, and requirements to help mitigate the impacts of the hazards identified in this Plan. **Table 4** contains a list of legal and regulatory capabilities.



Table 4. Planning and Regulatory Capabilities

| Capability Category | Local Authority | Other Jurisdictional Authority | State Mandated | Comments |
|--|-----------------|--------------------------------|----------------|---|
| Codes, Ordinances, and Requirements | | | | |
| Building Code | Yes | No | Yes | The District applies most current building codes (based on jurisdiction) in place with all new construction. |
| Post Disaster Recovery | Yes | No | No | |
| Site Plan Review | Yes | No | No | Site plans are reviewed for compliance with codes and development regulations. |
| Environmental Protection | Yes | No | Yes | State Board of Health School Rule, Chapter 246-366 Washington Administrative Code (WAC) |
| Capability Category | Local Authority | Other Jurisdictional Authority | State Mandated | Comments |
| Planning Documents | | | | |
| Comprehensive Plan | Yes | No | Yes | Cities in Washington State must update their Comprehensive Plan every eight (8) years, per GMA and RCW.36.70A. |
| Strategic Plan | Yes | No | No | |
| Capital Improvement Plan | Yes | No | No | |
| Standard Operating Procedures | Yes | No | No | Standard Operating Procedures (SOP) include response activities and equipment specific SOPs. |
| Emergency Operations Plan | Yes | No | No | Various types of plans in place, which help reduce the impact from the hazards of concern. |
| Public Health Plan | No | No | No | The District works with Kittitas County Public Health and Kittitas Emergency Management to ensure accurate information is relayed to students, families, and faculty. |

5.2. Administrative and Technical Capabilities

The administrative and technical capabilities include community (i.e., public and private) staff and their skills and tools, which can be used for mitigation planning and implementation. This capability includes engineers, planners, emergency managers, GIS analysts, building inspectors, grant writers, and floodplain managers. Small communities may rely on other government entities, such as counties or special districts, for resources. These capabilities may be used to support mitigation activities. **Table 5** lists administrative and technical capabilities.

Table 5. Administrative and Technical Capabilities

| Staff/Personnel Resources | Available | Department/Agency/Position |
|---|-----------|----------------------------------|
| Engineers or professionals trained in building or infrastructure construction practices | Yes | Director, Maintenance Department |
| Staff with an understanding of natural hazards | Yes | Director, Maintenance Department |



| Staff/Personnel Resources | Available | Department/Agency/Position |
|--|-----------|---|
| Staff with training in benefit/cost analysis | Yes | Business Manager, District Office |
| Floodplain Manager/Administrator | No | N/A |
| Personnel skilled or trained in GIS applications | No | N/A |
| Emergency Manager | Yes | Director, Maintenance Department Superintendent, District Office |
| Grant writers | Yes | Business Manager, District Office |

5.3. Financial Resources

Table 6 contains a list of financial capabilities available to the District. These financial resources may be used to support mitigation activities based on procedures for each resource.

Table 6. Financial Resources

| Financial Resources | Accessible or Eligible to Use |
|--|-------------------------------|
| Community Development Block Grants (CDBG) | Yes |
| Capital Improvements Project Funding | Yes |
| Authority to Levy Taxes for Specific Purposes | Yes |
| User Fees for Water, Sewer, Gas or Electric Service | No |
| Incur Debt through General Obligation Bonds | No |
| Incur Debt through Special Tax Bonds | No |
| Incur Debt through Private Activity Bonds | No |
| Withhold Public Expenditures in Hazard-Prone Areas | No |
| State Sponsored Grant Programs | Yes |
| Development Impact Fees for Homebuyers or Developers | No |

5.4. Education and Outreach Capabilities

Table 7 lists the District's financial and public outreach capabilities. These capabilities include fire safety programs, hazard awareness campaigns, public information, and communications offices. Education and outreach capabilities can be used to inform the public about current and potential mitigation activities.

Table 7. Education and Outreach Resources

| Resource | Available | Department/Agency/Position/Description |
|--|-----------|--|
| Public Information Officer | Yes | Superintendent, District Office |
| Personnel skilled or trained in website development | Yes | Technology Director, District Office |
| Hazard mitigation information available on your website | No | N/A |
| Utilize social media for hazard mitigation education and outreach | Yes | Facebook: facebook.com/kittitasschooldistrict/ |
| Citizen boards or commissions that address issues related to hazard mitigation | No | N/A |



| Resource | Available | Department/Agency/Position/Description |
|--|-----------|---|
| Other programs already in place that could be used to communicate hazard-related information | Yes | Director, Maintenance Department Superintendent, District Office |
| An established warning systems for hazard events | Yes | Director, Maintenance Department Superintendent, District Office |

5.5. Needs to Expand/Improve Capabilities

The Kittitas School District identified existing authorities, policies, programs, funding, and/or resources that need to be expanded and/or improved in order to support the implementation of the hazard mitigation initiatives identified in this Plan (e.g., mitigation actions).

- Grant writing capabilities must be expanded in order to improve the District's ability to apply for hazard mitigation grants.
- Enhance the District's website and social media to include educational material on hazard mitigation and to provide information on mitigation activities the District is doing (e.g., mitigation projects), and to educate residents about risk reduction.

6. HAZARD MITIGATION PLAN INTEGRATION

The information on hazards, risk, vulnerability, and mitigation contained in this Hazard Mitigation Plan is based on the best available data at the time of the Plan update. Plan integration consists of the incorporation of hazard mitigation into other relevant planning mechanisms (e.g., general planning and capital improvement planning). It includes the integration of natural hazard information and mitigation policies, principles, and actions into local planning mechanisms and vice versa. Additionally, plan integration is achieved through the involvement of key staff and community officials in collaborative hazard mitigation planning.

6.1. Existing Plan Integration

In the performance period since adoption of the previous Hazard Mitigation Plan, the Kittitas School District did not make progress on integrating hazard mitigation goals, objectives, and actions into other planning initiatives. The District is recommitted to integrating hazard mitigation into applicable plans and programs and has identified future opportunities for such integration.

6.2. Potential Future Integration

As the Hazard Mitigation Plan is implemented, Kittitas School District will use information from the Plan as the best available science and data on hazards. The capability assessment presented in Section 5 of this Annex identifies codes, plans, and programs that provide opportunities for integration. The Districtwide and local action plans developed for this Hazard Mitigation Plan are related to plan integration. The capability assessment identified plans and programs, listed in **Table 8**, that do not currently integrate goals and recommendations of this Plan but provide opportunities to do so in the future.

Table 8. Potential Future Integration

| Planning Initiative | Description |
|--------------------------|---|
| Capital Improvement Plan | The goals and actions of this Hazard Mitigation Plan will be considered in the next Capital Improvement Plan update and planning process. |
| District Website | Place this Hazard Mitigation Plan on the District website and provide information on hazard mitigation activities taking place throughout the District. |



| Planning Initiative | Description |
|---------------------------|--|
| Emergency Operations Plan | Utilize the hazard risk assessment of this Hazard Mitigation Plan to implement/enhance the District's Emergency Operations Plan. |

The District's Local Planning Team will identify all relevant planning initiatives that are scheduled to be updated in the next year and during the annual update process of the Hazard Mitigation Plan. Additionally, opportunities to integrate key elements of the Hazard Mitigation Plan, specifically any relevant strategies, into the planning initiatives will be identified by the Local Planning Team. Mitigation actions were identified to promote plan integration in future revisions of this Plan.

7. SIGNIFICANT HAZARD PAST EVENTS

A complete risk assessment, including past incidents, for each identified hazard of concern can be found in **Volume 1** of this Plan.

8. NATIONAL FLOOD INSURANCE PROGRAM

As a special district, the Kittitas School District is not eligible to participate in FEMA's National Flood Insurance Program (NFIP). Further information on Kittitas County's NFIP and Community Rating System (CRS) participation is available on **Volume 1** of this Plan.

9. HAZARD VULNERABILITY AND IMPACT ASSESSMENT

Exposure and vulnerability to certain hazards affect the entire County and others are geographically defined. Although the entire County may be vulnerable to these hazards, their impacts may vary based on existing community conditions (e.g., underserved, or functional access needs populations may be more susceptible based on certain conditions, vulnerabilities, or needs).

A complete risk assessment for each identified hazard of concern is in **Volume 1** of this Plan. **Table 9** provides information on a several key vulnerabilities for Kittitas School District. Hazard mapping can be found in **Appendix A** of this Annex.

Table 9. Hazard Vulnerability and Impact Assessment

| Hazards | Vulnerabilities and Impacts |
|--|--|
| Avalanche | The Local Planning Team determined that the District does not have unique vulnerabilities and impacts to avalanches. |
| Dam and Levee Failure | The Local Planning Team determined that the District does not have unique vulnerabilities and impacts to dam and levee failures. |
| Drought | The Local Planning Team determined that the District does not have unique vulnerabilities and impacts to drought. |
| Earthquake | The Local Planning Team determined that the District does not have unique vulnerabilities and impacts to earthquakes. |
| Flood | Huntzinger Road is vulnerable to flooding and road closures can result in school transportation routes issues. |
| Landslide | The Local Planning Team determined that the District does not have unique vulnerabilities and impacts to landslides. |
| Severe Weather (thunderstorms, hail, tornado, strong winds/damaging winds, extreme temperatures) | The Local Planning Team determined that the District does not have unique vulnerabilities and impacts to severe weather. |
| Volcanic Activity | The Local Planning Team determined that the District does not have unique vulnerabilities and impacts to volcanic activity. |



| Hazards | Vulnerabilities and Impacts |
|--|---|
| Wildfire (wildfire smoke) | Wildfire smoke caused by wildfire activity within and outside of Kittitas Valley significantly impact the air quality throughout the District which can affect outdoor activities for students. |
| Winter Weather (ice storms, heavy snow, and blizzards) | The Local Planning Team determined that the District does not have unique vulnerabilities and impacts to winter weather. However, significant winter weather events can result in extended school closures. |
| Communicable Diseases/Pandemic | Due to close proximities in schools, a school has the potential to become a super spreader site. |

The District evaluated whether vulnerability and impact in hazard prone areas had increased, decreased, or remained the same for each natural hazard identified in this Hazard Mitigation Plan. Climate change, changes in population, infrastructure expansion, and economic shifts that can affect vulnerability were considered. For example, if planned development is in an identified hazard areas or is not built to the updated building codes, it may increase the community's vulnerability to future hazards and disasters. On the other hand, if development occurred with mitigation practices in place, the vulnerability may have remained the same or decreased. Additionally, shifting demographics (e.g., underserved population) were taken into consideration.

Table 10 outlines if climate change has increased or decreased the District's vulnerability (i.e., exposure) and impact to each natural hazard over the past five (5) years, and the effect of climate change in the future probability of occurrence and impacts from each natural hazard.

Table 10. Climate Change Current and Future Vulnerability and Impact

| Hazard | Vulnerability and Impact |
|---|--------------------------|
| Current Vulnerability and Impact | |
| Avalanche | Remained the Same |
| Communicable Diseases/Pandemic | Remained the Same |
| Dam and Levee Failure | Increased |
| Drought | Increased |
| Earthquake | Remained the Same |
| Extreme Cold/Extreme Heat (<i>Severe Weather</i>) | Increased |
| Flood | Increased |
| Landslide | Increased |
| Severe Weather (<i>thunderstorms, hail, strong winds/damaging winds, and tornado</i>) | Increased |
| Volcanic Activity | Remained the Same |
| Winter Weather (<i>ice storms, heavy snow, blizzards</i>) | Increased |
| Wildfire (<i>Wildfire Smoke</i>) | Increased |
| Future Vulnerability and Impact | |
| Avalanche | No Change is Anticipated |
| Communicable Diseases/Pandemic | No Change is Anticipated |
| Dam and Levee Failure | Increase |



| Hazard | Vulnerability and Impact |
|---|--------------------------|
| Drought | Increase |
| Earthquake | No Change is Anticipated |
| Extreme Cold/Extreme Heat (<i>Severe Weather</i>) | Increase |
| Flood | Increase |
| Landslide | Increase |
| Severe Weather (<i>thunderstorms, hail, strong winds/damaging winds, and tornado</i>) | Increase |
| Volcanic Activity | No Change is Anticipated |
| Winter Weather (<i>ice storms, heavy snow, blizzards</i>) | Increase |
| Wildfire (<i>Wildfire Smoke</i>) | Increase |

Table 11 outlines if changes in population within the District over the past five (5) years have increased or decreased the vulnerability (i.e., exposure) and impact to these natural hazards, and the anticipated effects changes in population may have on the future probability of occurrence and impacts from these natural hazards.

Table 11. Changes in Population Current and Future Vulnerability and Impact

| Hazard | Vulnerability and Impact |
|---|--------------------------|
| Current Vulnerability and Impact | |
| Avalanche | Remained the Same |
| Communicable Diseases/Pandemic | Remained the Same |
| Dam and Levee Failure | Remained the Same |
| Drought | Remained the Same |
| Earthquake | Remained the Same |
| Extreme Cold/Extreme Heat (<i>Severe Weather</i>) | Remained the Same |
| Flood | Remained the Same |
| Landslide | Remained the Same |
| Severe Weather (<i>thunderstorms, hail, strong winds/damaging winds, and tornado</i>) | Remained the Same |
| Volcanic Activity | Remained the Same |
| Winter Weather (<i>ice storms, heavy snow, blizzards</i>) | Remained the Same |
| Wildfire (<i>Wildfire Smoke</i>) | Remained the Same |
| Future Vulnerability and Impact | |
| Avalanche | No Change is Anticipated |
| Communicable Diseases/Pandemic | No Change is Anticipated |
| Dam and Levee Failure | No Change is Anticipated |
| Drought | No Change is Anticipated |



| Hazard | Vulnerability and Impact |
|---|--------------------------|
| Current Vulnerability and Impact | |
| Earthquake | No Change is Anticipated |
| Extreme Cold/Extreme Heat (<i>Severe Weather</i>) | No Change is Anticipated |
| Flood | No Change is Anticipated |
| Landslide | No Change is Anticipated |
| Severe Weather (<i>thunderstorms, hail, strong winds/damaging winds, and tornado</i>) | No Change is Anticipated |
| Volcanic Activity | No Change is Anticipated |
| Winter Weather (<i>ice storms, heavy snow, blizzards</i>) | No Change is Anticipated |
| Wildfire (<i>Wildfire Smoke</i>) | No Change is Anticipated |

Table 12 outlines if development over the past five (5) years has increased or decreased the jurisdiction's vulnerability (i.e., exposure) and impact to these natural hazards, and the anticipated effects changes in development may have on the future probability of occurrence and impacts from these natural hazards.

Table 12. Changes in Development Current and Future Vulnerability and Impact

| Hazard | Vulnerability and Impact |
|---|--------------------------|
| Current Vulnerability and Impact | |
| Avalanche | Remained the Same |
| Communicable Diseases/Pandemic | Remained the Same |
| Dam and Levee Failure | Remained the Same |
| Drought | Remained the Same |
| Earthquake | Remained the Same |
| Extreme Cold/Extreme Heat (<i>Severe Weather</i>) | Remained the Same |
| Flood | Remained the Same |
| Landslide | Remained the Same |
| Severe Weather (<i>thunderstorms, hail, strong winds/damaging winds, and tornado</i>) | Remained the Same |
| Volcanic Activity | Remained the Same |
| Winter Weather (<i>ice storms, heavy snow, blizzards</i>) | Remained the Same |
| Wildfire (<i>Wildfire Smoke</i>) | Remained the Same |
| Future Vulnerability and Impact | |
| Avalanche | No Change is Anticipated |
| Communicable Diseases/Pandemic | No Change is Anticipated |
| Dam and Levee Failure | No Change is Anticipated |
| Drought | No Change is Anticipated |
| Earthquake | No Change is Anticipated |



| Hazard | Vulnerability and Impact |
|---|--------------------------|
| Current Vulnerability and Impact | |
| Extreme Cold/Extreme Heat (<i>Severe Weather</i>) | No Change is Anticipated |
| Flood | No Change is Anticipated |
| Landslide | No Change is Anticipated |
| Severe Weather (<i>thunderstorms, hail, strong winds/damaging winds, and tornado</i>) | No Change is Anticipated |
| Volcanic Activity | No Change is Anticipated |
| Winter Weather (<i>ice storms, heavy snow, blizzards</i>) | No Change is Anticipated |
| Wildfire (<i>Wildfire Smoke</i>) | No Change is Anticipated |

The District does not anticipate future major assets to be exposed or vulnerable to any of the hazards identified in this Plan. However, any new assets (e.g., new construction in hazard prone areas) will be constructed to adhere to the latest building codes and standards, and mitigation to protect them from identified and anticipated hazards, especially those that are expected to increase due to climate change.

10. HAZARD RISK RANKING

Table 13 presents the local hazard ranking for Kittitas School District of all hazards of concern listed in **Volume 1** of this Plan. This ranking summarizes how hazards vary for this jurisdiction. As described in detail in **Volume 1**, the ranking process involves an assessment of the likelihood of occurrence for each hazard, along with its potential impacts on people, property, and the economy.

Table 13. Hazard Risk Ranking

| Hazard Event | Probability Factor | Sum of Weighted Extent Factors | Sum of Weighted Vulnerability Factors | Sum of Weighted Impact Factors | Consequence Score | Total Risk Score (Probability x Consequence) |
|--|--------------------|--------------------------------|---------------------------------------|--------------------------------|-------------------|---|
| Winter Weather (<i>Blizzard/Heavy Snow, Ice Storm</i>) | 3 | 15 | 16 | 24 | 55 | 77 |
| Earthquake | 2 | 12 | 16 | 33 | 61 | 59 |
| Strong Wind / Damaging Winds (<i>Severe Weather</i>) | 3 | 9 | 16 | 15 | 40 | 59 |
| Wildfire Smoke (<i>Wildfire</i>) | 3 | 9 | 10 | 20 | 39 | 57 |
| Flood | 2 | 15 | 11 | 31 | 57 | 56 |
| Wildfire | 2 | 15 | 11 | 27 | 53 | 53 |
| Thunderstorms (<i>Severe Weather</i>) | 2 | 6 | 16 | 26 | 48 | 48 |
| Communicable Diseases / Pandemic | 2 | 18 | 10 | 20 | 48 | 48 |
| Cold Wave / Extreme Cold (<i>Severe Weather</i>) | 2 | 12 | 12 | 20 | 44 | 45 |



| Hazard Event | Probability Factor | Sum of Weighted Extent Factors | Sum of Weighted Vulnerability Factors | Sum of Weighted Impact Factors | Consequence Score | Total Risk Score (Probability x Consequence) |
|---|--------------------|--------------------------------|---------------------------------------|--------------------------------|-------------------|---|
| Heat Wave / Extreme Heat (Severe Weather) | 2 | 12 | 12 | 17 | 41 | 42 |
| Drought | 2 | 9 | 6 | 16 | 31 | 33 |
| Hail (Severe Weather) | 1 | 6 | 16 | 16 | 38 | 22 |
| Tornado (Severe Weather) | 1 | 6 | 16 | 16 | 38 | 22 |
| Dam and Levee Failure | 1 | 9 | 11 | 16 | 36 | 21 |
| Volcanic Activity | 1 | 12 | 6 | 15 | 33 | 20 |
| Landslide | 1 | 6 | 7 | 13 | 26 | 16 |
| Avalanche | 1 | 6 | 6 | 13 | 25 | 15 |
| <p>Consequence: Sum of <u>all</u> weighted factors. Extent: Sum of the weighted <u>Extent</u> factors. Vulnerability: Sum of the weighted <u>Vulnerability</u> factors.</p> <p>Impact: Sum of the weighted <u>Impact</u> factors. Total Risk Score* = Probability x Consequence * Normalized to 100</p> | | | | | | |
| Total Risk Score Legend | | | | | | |
| Classification | Probability Factor | Extent | Vulnerability | Impact | Consequence Score | Total Risk Score |
| Low (L) | 1 | 0 – 6 | 0 – 6 | 0 – 12 | 0 – 24 | 0 – 24 |
| Medium (M) | 2 | 7 – 12 | 7 – 12 | 13 – 26 | 25 – 50 | 25 – 54 |
| High (H) | 3 | 13 – 18 | 13 – 18 | 27 – 39 | 51 – 75 | 53 and above |
| <p>The legend—specifically the assignment of low, medium, and high—provides an additional means to qualitatively assess the probability factor, sum of weighted factors, and the total risk scores for each hazard. The Consequence Score represents the sum of the Extent, Vulnerability, and Impact Factors. The Total Risk Score is a measure of Probability and Consequence.</p> | | | | | | |



11. MITIGATION ACTIONS

This section includes the mitigation actions that were developed to address identified risks and vulnerabilities to hazards identified in this Plan. This Plan serves only to recommend mitigation measures based on the potential for risk reduction and available funding. Implementation of mitigation actions is dependent on risk reduction priorities, feasibility, and available funding. It is also dependent on the cooperation and support of the jurisdiction and/or department responsible for each action item.

Kittitas School District agreed upon **five (5)** mitigation actions that apply to the jurisdiction's properties where they have jurisdictional responsibility and authority. One (1) mitigation action was completed. A summary of the District's mitigation actions status is listed in **Table 14**.

Table 14. Kittitas School District Mitigation Actions Summary

| Status | | Mitigation Action Total | |
|-------------------------------|---|-------------------------|---|
| Ongoing | | 2 | |
| In Progress/In Work | | 0 | |
| Not Started | | 3 | |
| Delayed/Deferred | | 0 | |
| New | | 0 | |
| TOTAL | | 5 | |
| Completed | | 1 | |
| Deleted/No Longer Needed | | 0 | |
| Mitigation Actions per Hazard | | | |
| Avalanche | 5 | Landslide | 5 |
| Dam and Levee Failure | 5 | Severe Weather | 5 |
| Drought | 5 | Volcanic Activity | 5 |
| Earthquake | 5 | Wildfire | 5 |
| Flood | 5 | Winter Weather | 5 |

These shared actions, some of which address all hazards, help to meet the following requirements:

- Does the Plan identify and analyze a comprehensive range of specific mitigation actions and projects for each jurisdiction being considered to reduce the effects of hazards, with emphasis on new and existing buildings and infrastructure?
- Does the Plan include one (1) or more action(s) per jurisdiction for each hazard identified within the risk assessment?

A detailed explanation of the Mitigation Strategy can be found in Chapter 5 of **Volume 1**.



| Mitigation Action | Remove football field light poles at former school because the poles have structurally weakened over time. | | | | |
|---|--|---|--|----------------------|-----|
| Action Number | KSD-1 | Year Initiated / Anticipated Year of Initiation | n/a | Prioritization Score | n/a |
| Goal(s) Addressed | | 1, 5 | Hazard(s) Mitigated | Earthquake | |
| Project Status | | Completed | If Deleted/No Longer Needed, provide reason. | n/a | |
| Benefits (Loss Avoided) | | n/a | | | |
| Lead Agency / Organization | Kittitas School District | | Supporting Agency / Organization (If applicable) | n/a | |
| Additional Participating Jurisdictions (If applicable) | n/a | | | | |
| Project Duration | n/a | | Estimated Cost | n/a | |
| Potential Funding Source | n/a | | If Other, you must identify a funding source. | n/a | |
| | | | Please provide further detail on Potential Funding Source. | n/a | |
| Implementation Priority | n/a | Changes in Priority (If applicable) | | | |



| Mitigation Action | Develop and implement an Emergency Operations Plan (EOP) to ensure critical District functions remain operational after an incident or disaster. | | | | |
|---|--|---|--|--|-------|
| Action Number | KSD-2 | Year Initiated / Anticipated Year of Initiation | 2027 | Prioritization Score | 27/40 |
| Goal(s) Addressed | | 1 | Hazard(s) Mitigated | Avalanche, Dam and Levee Failure, Drought, Earthquake, Flood, Landslide, Severe Weather, Volcanic Activity, Wildfire, Winter Weather | |
| Project Status | | Not Started | If Deleted/No Longer Needed, provide reason. | n/a | |
| Benefits (Loss Avoided) | | High | | | |
| Lead Agency / Organization | Kittitas School District | | Supporting Agency / Organization (If applicable) | n/a | |
| Additional Participating Jurisdictions (If applicable) | n/a | | | | |
| Project Duration | Short Term | | Estimated Cost | Medium | |
| Potential Funding Source | Local Budgeted Funds, HMGP, BRIC | | If Other, you <u>must</u> identify a funding source. | n/a | |
| | | | Please provide further detail on Potential Funding Source. | District General Fund (Staff Time), Capital Improvement Grants | |
| Implementation Priority | Medium | Changes in Priority (If applicable) | | | |



| Mitigation Action | Develop and implement a Continuity of Operations Plan (COOP) to ensure critical District functions remain operational after an incident or disaster. | | | | |
|--|--|---|--|--|-------|
| Action Number | KSD-3 | Year Initiated / Anticipated Year of Initiation | 2027 | Prioritization Score | 24/40 |
| Goal(s) Addressed | | 1, 4 | Hazard(s) Mitigated | Avalanche, Dam and Levee Failure, Drought, Earthquake, Flood, Landslide, Severe Weather, Volcanic Activity, Wildfire, Winter Weather | |
| Project Status | | Not Started | If Deleted/No Longer Needed, provide reason. | n/a | |
| Benefits <i>(Loss Avoided)</i> | | High | | | |
| Lead Agency / Organization | Kittitas School District | | Supporting Agency / Organization <i>(If applicable)</i> | n/a | |
| Additional Participating Jurisdictions <i>(If applicable)</i> | n/a | | | | |
| Project Duration | Long Term | | Estimated Cost | Medium | |
| Potential Funding Source | Local Budgeted Funds, BRIC, FMA, HMGP | | If Other, you must identify a funding source. | n/a | |
| | | | Please provide further detail on Potential Funding Source. | District General Fund (Staff Time) | |
| Implementation Priority | Medium | Changes in Priority <i>(If applicable)</i> | | | |



| | | | | | |
|---|---|--|--|--|-------|
| Mitigation Action | Partner with the City of Kittitas and Kittitas County Sheriff's Office (Emergency Management) on a public outreach campaign for parents and students on natural hazards, their risks, and alternatives to reduce the risks and impacts within the District. | | | | |
| Action Number | KSD-4 | Year Initiated / Anticipated Year of Initiation | 2027 | Prioritization Score | 27/40 |
| Goal(s) Addressed | 1, 2, 5 | | Hazard(s) Mitigated | Avalanche, Dam and Levee Failure, Drought, Earthquake, Flood, Landslide, Severe Weather, Volcanic Activity, Wildfire, Winter Weather | |
| Project Status | Not Started | | If Deleted/No Longer Needed, provide reason. | n/a | |
| Benefits (Loss Avoided) | Low | | | | |
| Lead Agency / Organization | Kittitas School District | | Supporting Agency / Organization (If applicable) | City of Kittitas, Kittitas County Sheriff's Office (Emergency Management) | |
| Additional Participating Jurisdictions (If applicable) | n/a | | | | |
| Project Duration | Short Term | | Estimated Cost | Low | |
| Potential Funding Source | Local Budgeted Funds | If Other, you must identify a funding source. | | n/a | |
| | | Please provide further detail on Potential Funding Source. | | District General Fund (Staff Time) | |
| Implementation Priority | Medium | Changes in Priority (If applicable) | | | |



| Mitigation Action | Support, through active participation, the Countywide initiatives identified in Volume 1 (Countywide Planning Elements) of the Kittitas County Hazard Mitigation Plan. | | | | |
|---|--|---|--|--|-------|
| Action Number | KSD-5 | Year Initiated / Anticipated Year of Initiation | 2012 | Prioritization Score | 40/40 |
| Goal(s) Addressed | 1, 2, 3, 4, 5 | | Hazard(s) Mitigated | Avalanche, Dam and Levee Failure, Drought, Earthquake, Flood, Landslide, Severe Weather, Volcanic Activity, Wildfire, Winter Weather | |
| Project Status | Ongoing | | If Deleted/No Longer Needed, provide reason. | n/a | |
| Benefits (Loss Avoided) | Medium | | | | |
| Lead Agency / Organization | Kittitas School District | | Supporting Agency / Organization (If applicable) | n/a | |
| Additional Participating Jurisdictions (If applicable) | n/a | | | | |
| Project Duration | Ongoing | | Estimated Cost | Low | |
| Potential Funding Source | Local Budgeted Funds | | If Other, you <u>must</u> identify a funding source. | n/a | |
| | | | Please provide further detail on Potential Funding Source. | District General Fund (Staff Time) | |
| Implementation Priority | High | Changes in Priority (If applicable) | | | |



| Mitigation Action | Continue to support through active participation the countywide initiatives identified in Volume 1 of the Kittitas County Hazard Mitigation Plan. | | | | |
|---|---|---|--|--|-------|
| Action Number | KSD-6 | Year Initiated / Anticipated Year of Initiation | 2012 | Prioritization Score | 40/40 |
| Goal(s) Addressed | 1, 2, 3, 4, 5 | | Hazard(s) Mitigated | Avalanche, Dam and Levee Failure, Drought, Earthquake, Flood, Landslide, Severe Weather, Volcanic Activity, Wildfire, Winter Weather | |
| Project Status | Ongoing | | If Deleted/No Longer Needed, provide reason. | n/a | |
| Benefits (Loss Avoided) | Medium | | | | |
| Lead Agency / Organization | Kittitas School District | | Supporting Agency / Organization (If applicable) | n/a | |
| Additional Participating Jurisdictions (If applicable) | n/a | | | | |
| Project Duration | Ongoing | | Estimated Cost | Low | |
| Potential Funding Source | Local Budgeted Funds | | If Other, you <u>must</u> identify a funding source. | n/a | |
| | | | Please provide further detail on Potential Funding Source. | District General Fund (Staff Time) | |
| Implementation Priority | High | Changes in Priority (If applicable) | | | |



APPENDIX A. HAZARD MAPS

| | |
|-----------------|---|
| Figure 1 | Kittitas School District Planning Area |
| Figure 2 | Liquefaction Susceptibility (Earthquake) <i>Helps assess potential damage from earthquakes in the District.</i> |
| Figure 3 | Special Flood Hazard Area (SFHA) <i>Includes each Flood Zone, and the 500-year floodplain. Flood Insurance Rate Maps (FIRMs) show the flood zones, floodplain boundaries, and Base Floor Elevation (BFE) and are used for floodplain management, flood insurance ratings, and to determine flood insurance requirements. FIRMs show areas with a 1% chance of flooding each year, commonly known as the 100-year floodplains, and are illustrated as the SFHA. The 500-year floodplains show areas with a 0.2% chance of flooding each year.</i> |
| Figure 4 | Wildland Fire Hazard Area |
| Figure 5 | Wildland Urban Interface Map |



Figure 1. Kittitas School District Planning Area

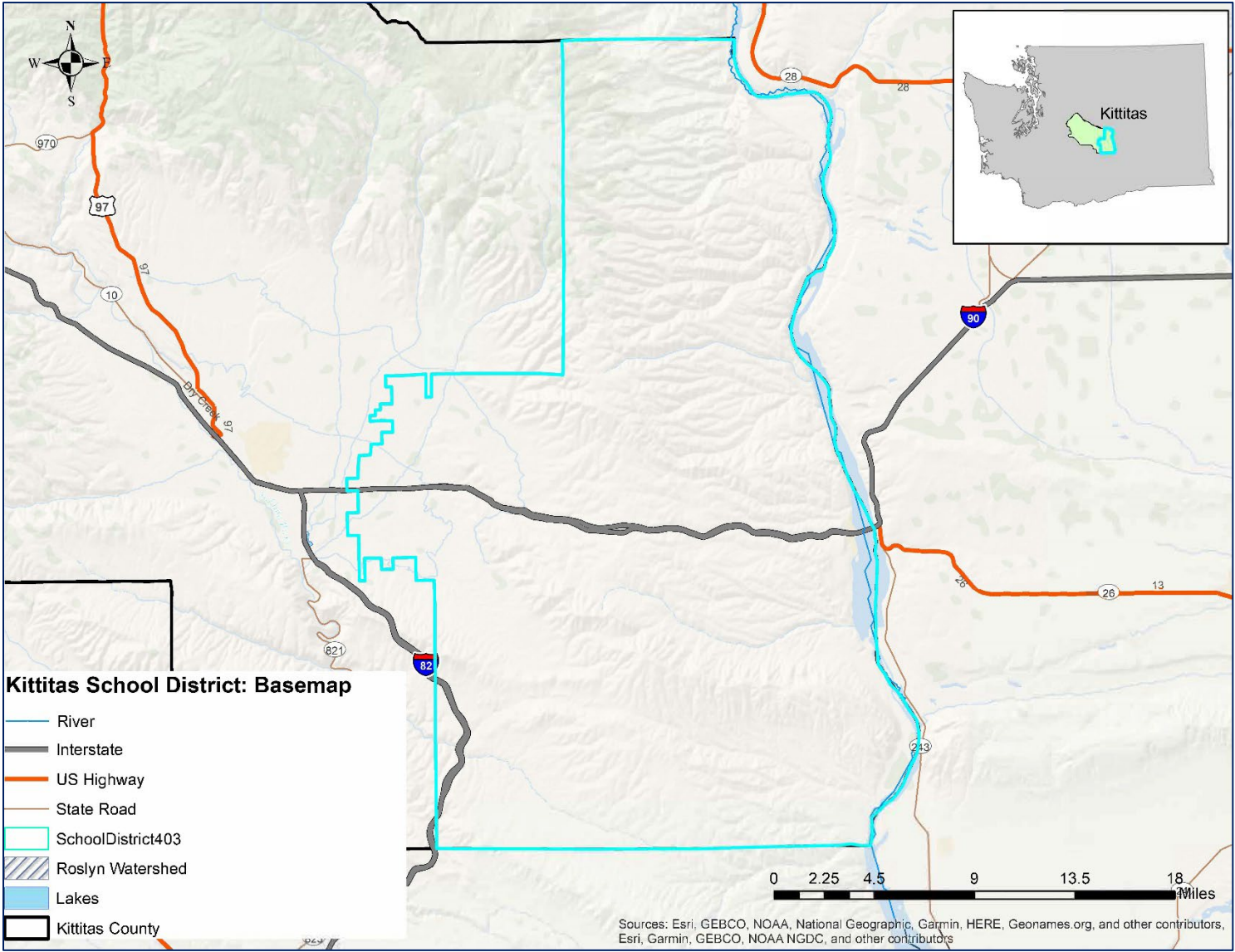




Figure 2. Liquefaction Susceptibility (Earthquake)

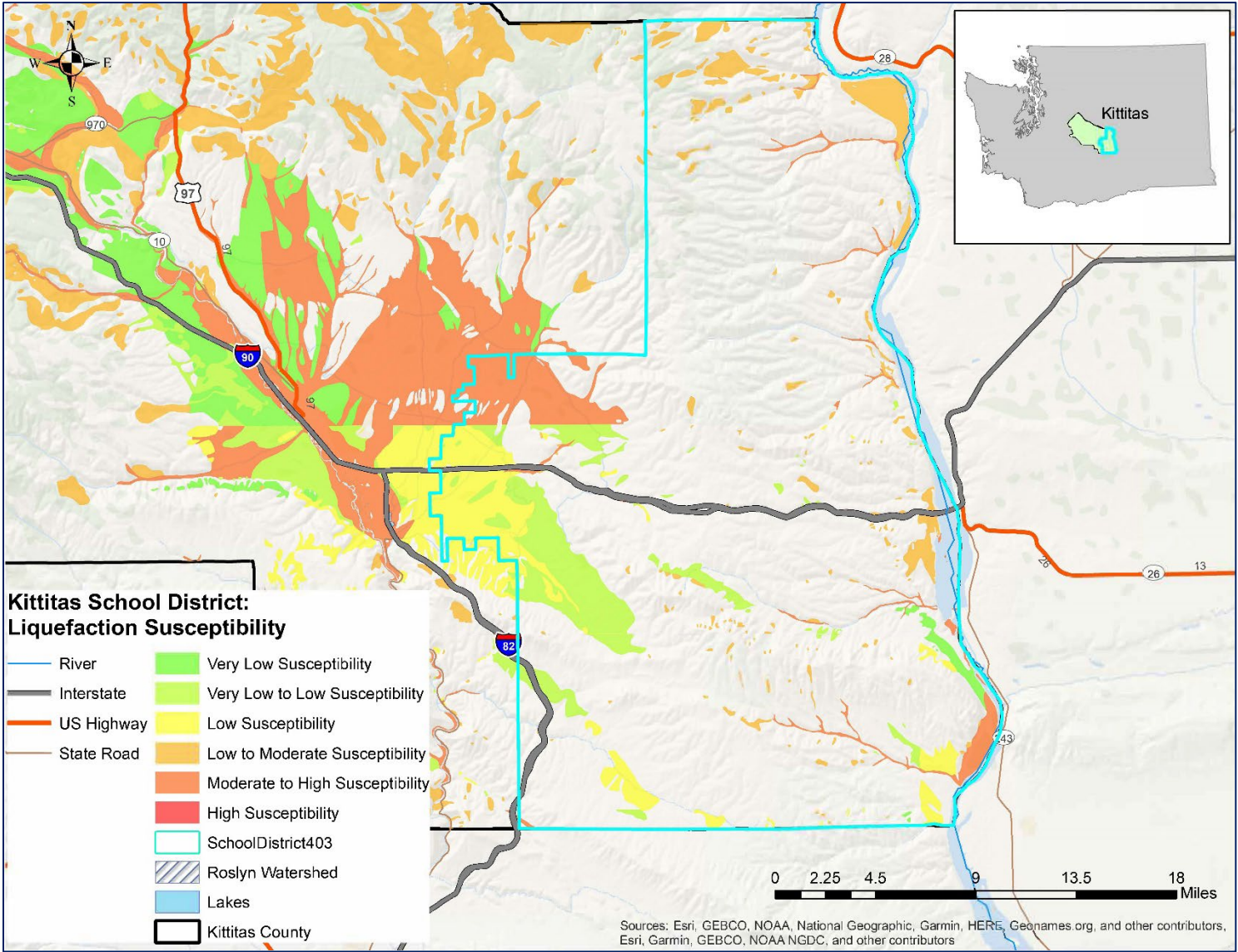




Figure 3. Special Flood Hazard Area

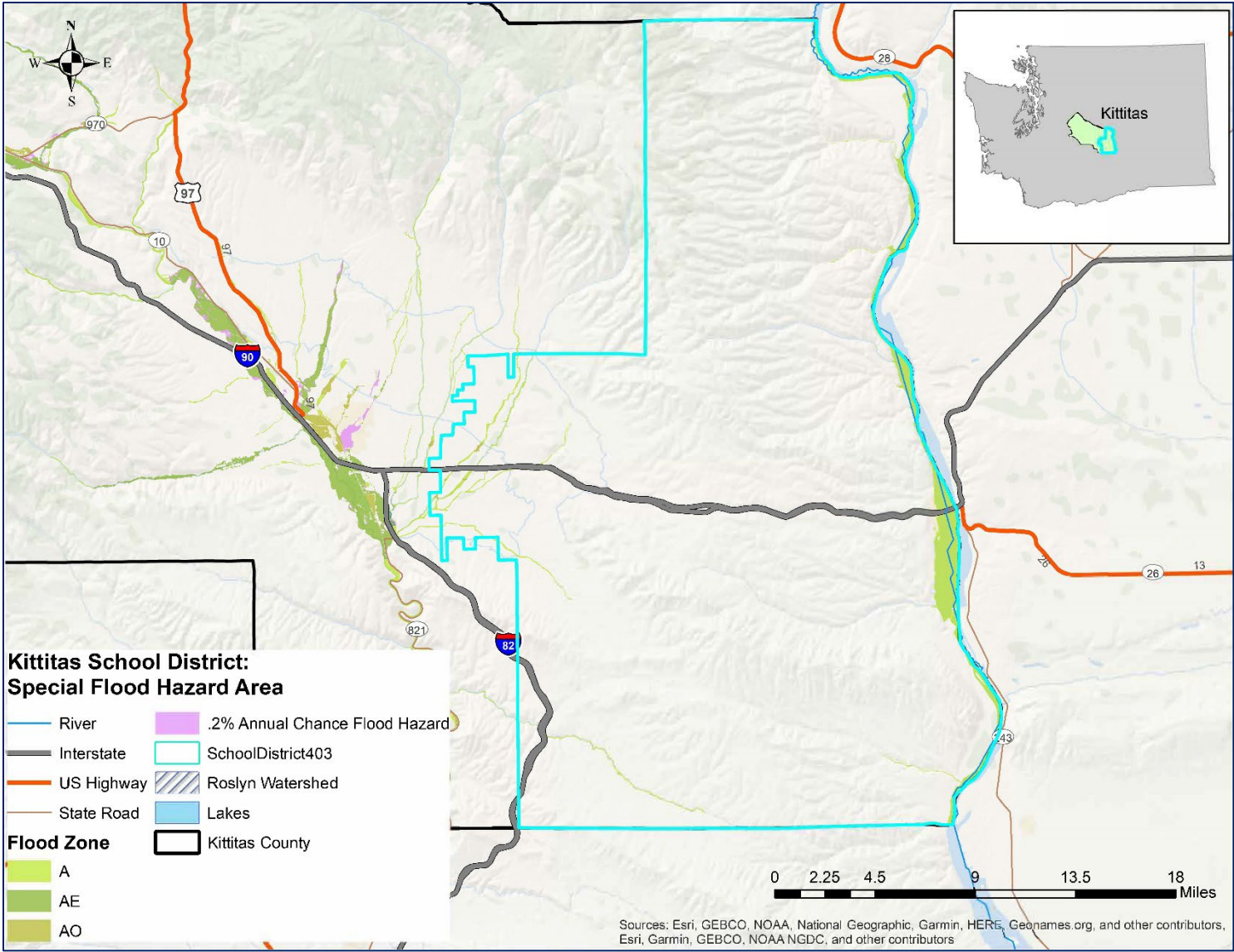




Figure 4. Wildland Fire Hazard Area

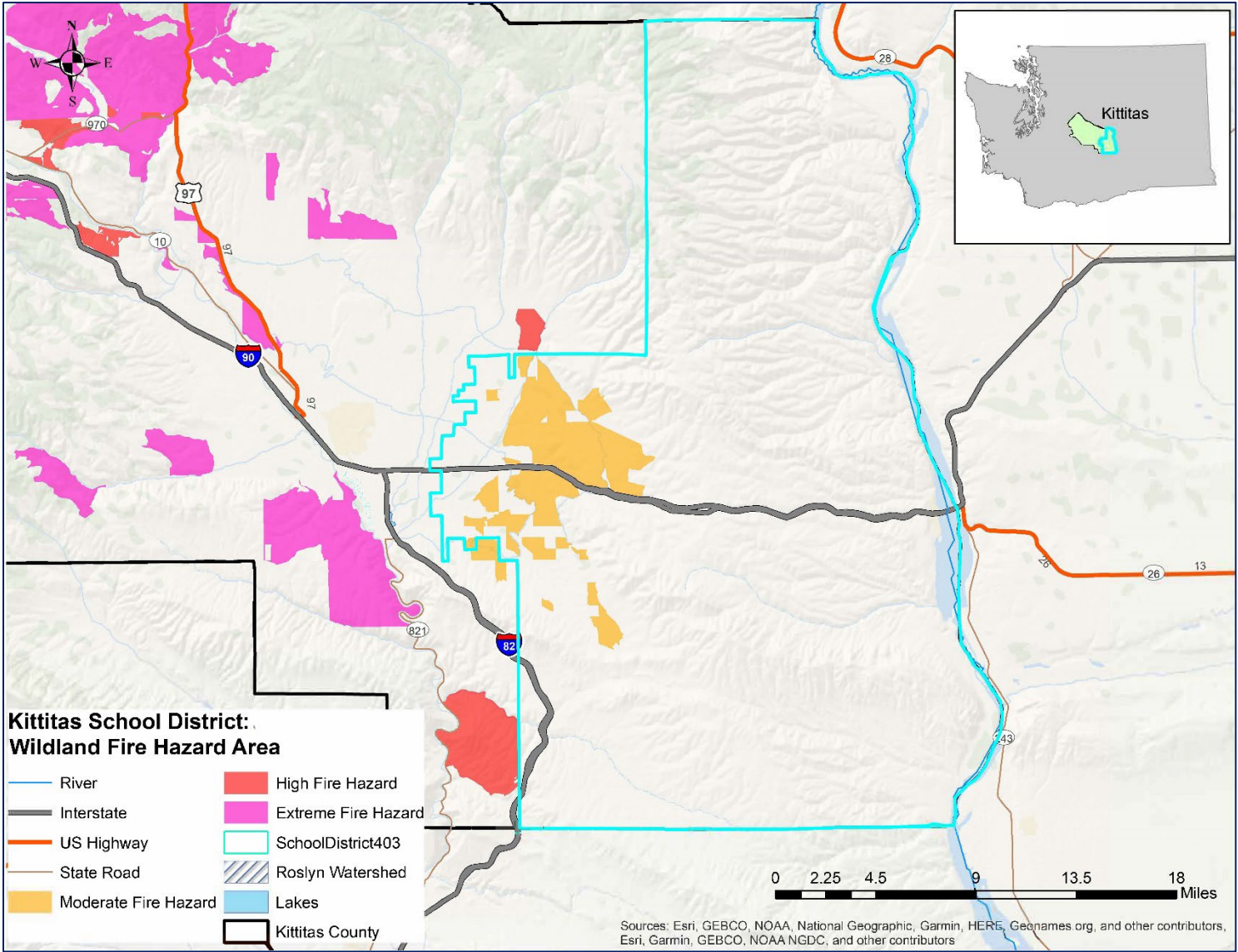
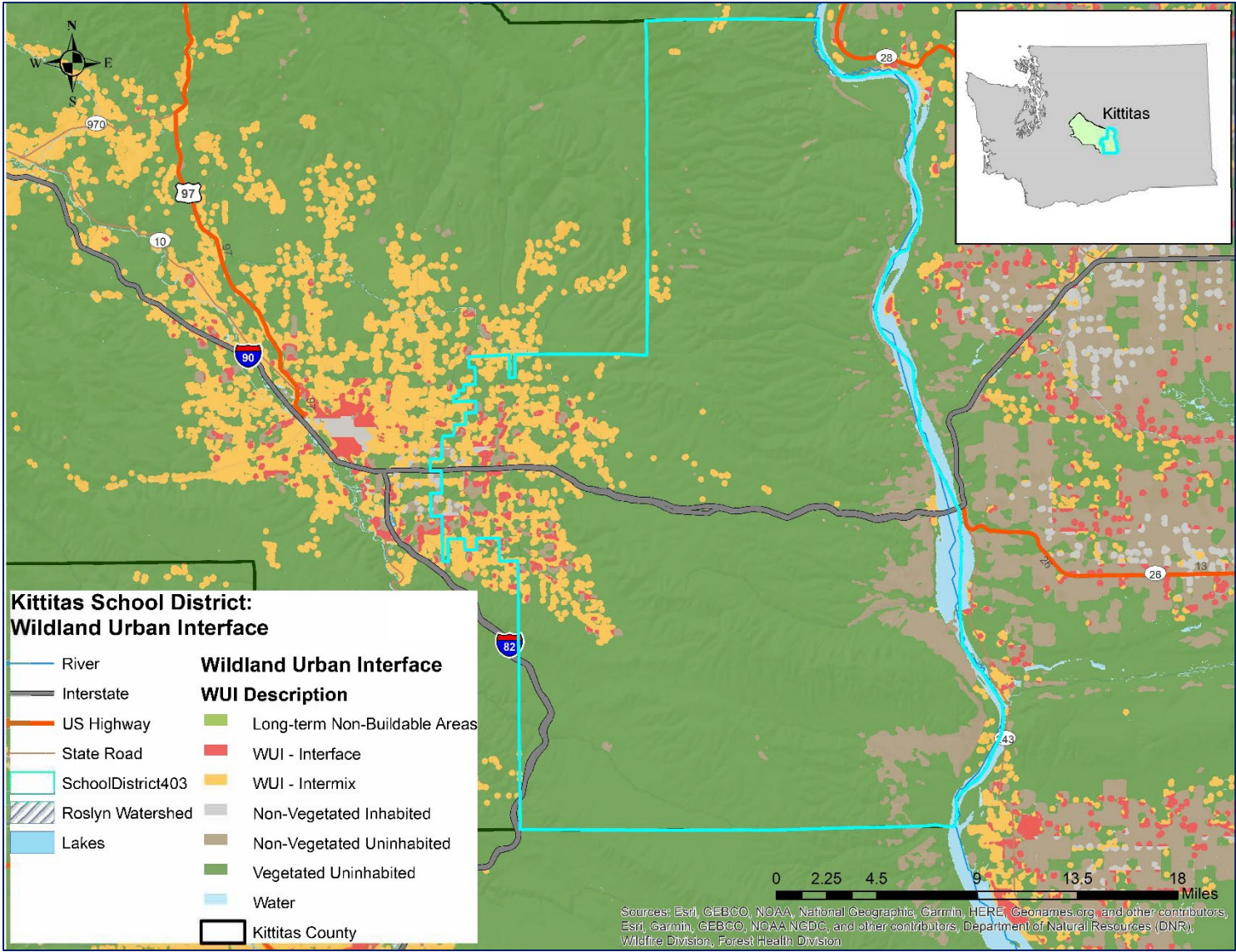




Figure 5. Wildland Urban Interface





APPENDIX B. PLAN ADOPTION

[Placeholder for adoption documentation after State and FEMA Approval]